

Jebens saves the day

When heavy plate is used as a guillotine



Picture 1: High-speed order for Jebens: two plates – each measuring 7,700 mm long, 1,900 mm wide and 150 mm thick with flame cuts for maritime salvage.



Picture 2: Within two days Jebens had the processed massive steel plates ready for transport.



Picture 3: Immediate availability of material from stock and clearly defined process flows enable Jebens to have extremely short lead times for the plates urgently needed for maritime salvage.



Picture 4: Within a very short time, Jebens supplied two flame-cut plates including perforations for the suspension of the plates and polishing for the salvage specialist Koole Contractors.

Picture 1-4: © Jebens GmbH

We would be pleased to send you these or other images in printable resolution via e-mail.

Such image material may be used solely for the JEBENS text stated here. Any and all other uses, and use for non-JEBENS corporate purposes in particular, is hereby expressly prohibited.



impetus.PR

Agentur für Corporate Communications GmbH

Ursula Herring-Tusch

Charlottenburger Allee 27-29

D-52068 Aachen

Tel: +49 [0] 241 / 1 89 25 - 10

Fax: +49 [0] 241 / 1 89 25 - 29

E-Mail: herring-tusch@impetus-pr.de

Jebens saves the day

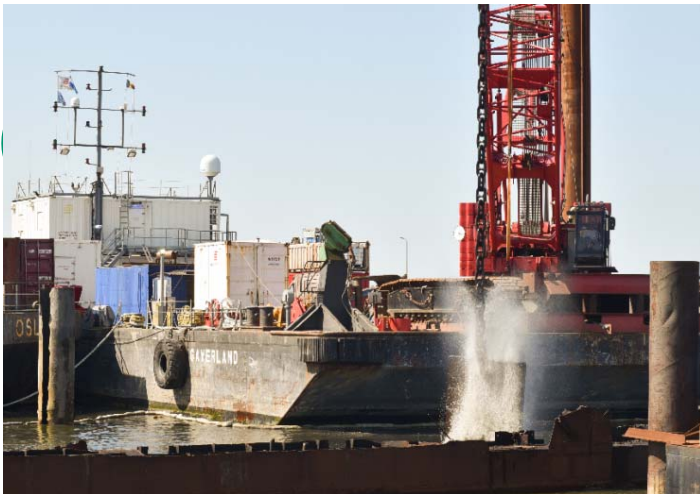
When heavy plate is used as a guillotine



Picture 5: The flame-cutting specialist Jebens processed the plates in the shortest possible time so that they were on site on time.



Picture 6: A prerequisite for Jebens' high-speed orders is one of Europe's biggest stocks of large-format heavy plates in thicknesses of 150 mm or more.



Picture 7: The plate is hoisted up by a special crane and then dropped from a great height – transforming the heavy plate into a highly effective guillotine.



Picture 8: The plate serves as a cutting tool for the segmenting of the shipwrecked vessel.

Picture 5-6: © Jebens GmbH
Picture 7-8: © Watse Roorda

We would be pleased to send you these or other images in printable resolution via e-mail.

Such image material may be used solely for the JEBENS text stated here. Any and all other uses, and use for non-JEBENS corporate purposes in particular, is hereby expressly prohibited.



impetus.PR

Agentur für Corporate Communications GmbH

Ursula Herring-Tusch

Charlottenburger Allee 27-29

D-52068 Aachen

Tel: +49 [0] 241 / 1 89 25 - 10

Fax: +49 [0] 241 / 1 89 25 - 29

E-Mail: herring-tusch@impetus-pr.de