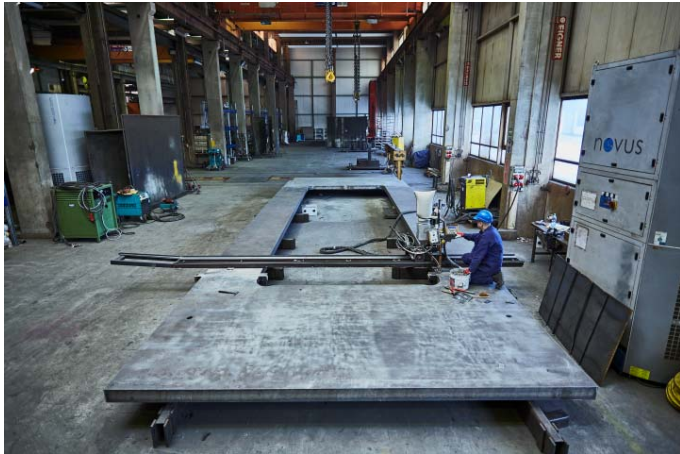


## Under extreme pressure

Precision press line gets railway wheels for high-speed trains into shape



Picture 1: Schuler commissioned Jebens, as a leading specialist for large, heavy flame-cut parts and redal-to-install welded components, with the production of the press plates.



Picture 2: There are not many welding companies capable of fulfilling the correspondingly demanding welding specifications defined by Schuler.



Picture 4: The 15 metre long, 5.8 metre wide and 3.8 metre tall annealing furnace had no problem in accomodating the gigantic dimensions of the large-format components.

Picture 3: The required seam precision was ensured by using the welding robot for multilayer welding with absolutely consistent and fault-free welding seams.

Pictures 1-4: © Jebens GmbH

We would be pleased to send you these or other images in printable resolution via e-mail.

Such image material may be used solely for the JEBENS subject stated here. Any and all other uses, and use for non-JEBENS corporate purposes in particular, is hereby expressly prohibited.



**impetus.PR**

Agentur für Corporate Communications GmbH

Ursula Herrling-Tusch

Charlottenburger Allee 27-29

D-52068 Aachen

Tel: +49 [0] 241 / 1 89 25 - 10

Fax: +49 [0] 241 / 1 89 25 - 29

E-Mail: herrling-tusch@impetus-pr.de

## Under extreme pressure

Precision press line gets railway wheels for high-speed trains into shape



Picture 5: From the pre-forging press, a gantry robot conveys the wheel blanks to the core component of the forging line, the wheel roller.



Picture 6: The wheel blanks are forwarded by robot to the pre-forging press, where, in two forming stages, they are forged with a press force of 10,000 tons.

### Important information concerning the use of these pictures:

It is not allowed to edit Pictures 5 + 6. They can only be used with the addition „Designed by Schuler“ as seen in the pictures. In case of contravention Schuler AG will initiate legal consequences.

Pictures 5-6: © Schuler Pressen GmbH

We would be pleased to send you these or other images in printable resolution via e-mail.

Such image material may be used solely for the JEBENS subject stated here. Any and all other uses, and use for non-JEBENS corporate purposes in particular, is hereby expressly prohibited.



### impetus.PR

Agentur für Corporate Communications GmbH

Ursula Herrling-Tusch  
Charlottenburger Allee 27-29  
D-52068 Aachen  
Tel: +49 [0] 241 / 1 89 25 - 10  
Fax: +49 [0] 241 / 1 89 25 - 29  
E-Mail: herrling-tusch@impetus-pr.de