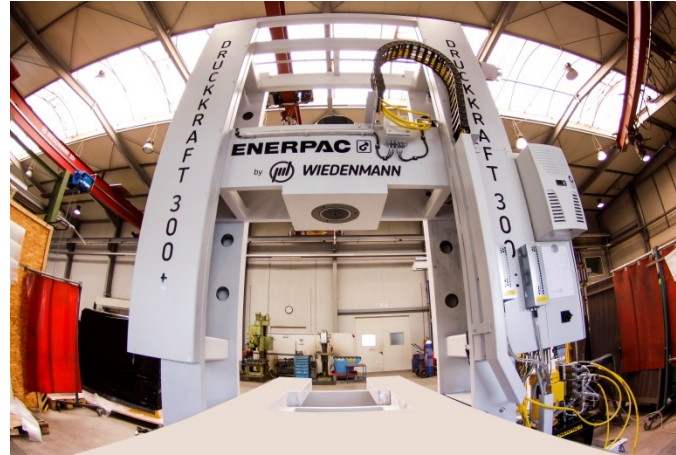


Precision steelwork for roll frame presses: Fine-grained steel perfected



Picture 1: View into the production hall of Wiedenmann-Seile GmbH.



Picture 2: With the press table, eleven different press-table inserts and the base components for the mobile upper yoke, Jebens created the core elements of the base construction for this high-end press.



Picture 3+4: For this four metre high and 2.8 metre wide roll frame press with 3,193 kN (300 tonnes) of pressing force, a table length of 3.8 metres and 13 tonnes tare weight, Jebens welded press table and base components of the upper yoke.



Picture 5: The massive welded and completely electrified roll frame construction is movable along a distance of 1,750 millimetres.

Picture 1-5: © Wiedenmann-Seile GmbH

We would be pleased to send you these or other images in printable resolution via e-mail.

Such image material may be used solely for the JEBENS subject stated here. Any and all other uses, and use for non-JEBENS corporate purposes in particular, is hereby expressly prohibited.



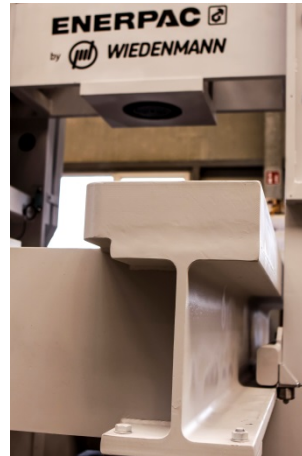
impetus.PR
Agentur für Corporate Communications GmbH

Ursula Herrling-Tusch
Charlottenburger Allee 27-29
D-52068 Aachen
Tel: +49 [0] 241 / 1 89 25 - 10
Fax: +49 [0] 241 / 1 89 25 - 29
E-Mail: herrling-tusch@impetus-pr.de

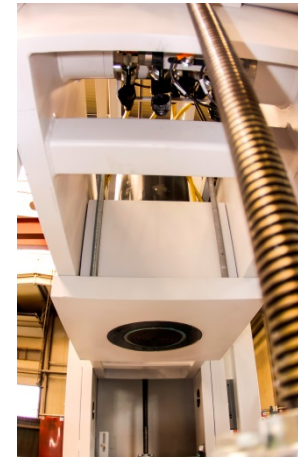
Precision steelwork for roll frame presses: Fine-grained steel perfected



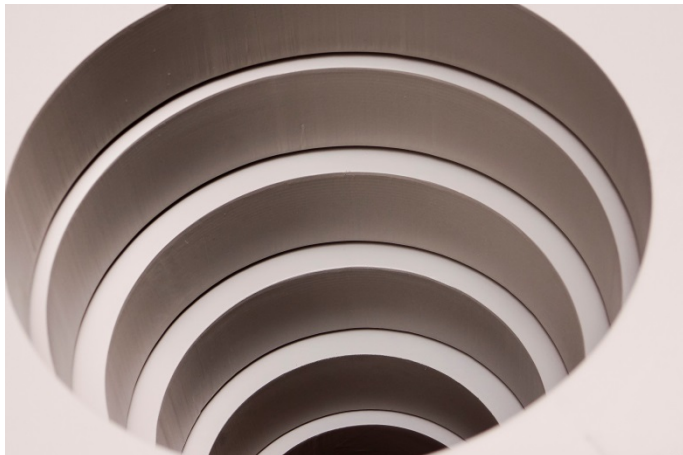
Picture 6: The electronically adjustable upper yoke can be set in five stages of 400 millimetres via a spindle drive and operating panel.



Picture 7: Jebens used S690 QL quality fine-grained steel to ensure the required high pressure load of 3,193 kN.



Picture 8: The hydraulic cylinder mounted centrally in the upper yoke locks automatically in the new position.



Picture 9: Jebens manufactured eleven different press-table inserts for the high-end press.



Picture 10: The availability of high-strength steels in their own stock - in thicknesses from 30 to 300 millimetres – spoke in favour of Jebens.

Picture 6-9: © Wiedenmann-Seile GmbH
Picture 10: © Jebens GmbH

We would be pleased to send you these or other images in printable resolution via e-mail.

Such image material may be used solely for the JEBENS subject stated here. Any and all other uses, and use for non-JEBENS corporate purposes in particular, is hereby expressly prohibited.



impetus.PR
Agentur für Corporate Communications GmbH

Ursula Herrling-Tusch
Charlottenburger Allee 27-29
D-52068 Aachen
Tel: +49 [0] 241 / 1 89 25 - 10
Fax: +49 [0] 241 / 1 89 25 - 29
E-Mail: herrling-tusch@impetus-pr.de

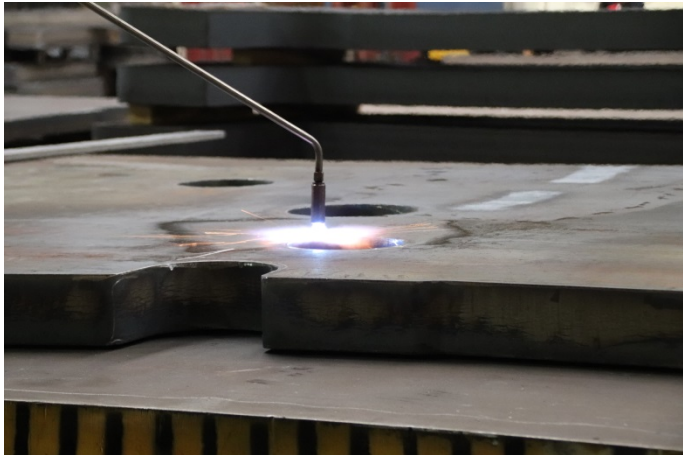
Precision steelwork for roll frame presses: Fine-grained steel perfected



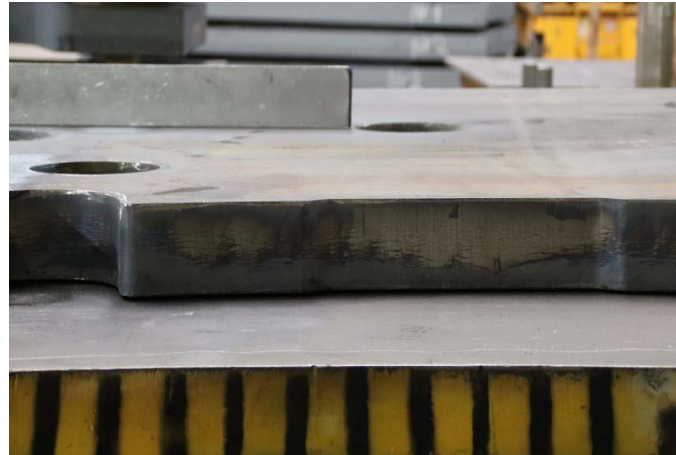
Picture 11: The fine-grained steel was pre-heated to 150 degrees Celsius and parameters such as oxygen pressure and the cutting speed were set accordingly.



Picture 12: The profiling was performed with several burners operating in parallel.



Picture 13+14: For the straightening of the 120-millimetre-thick sheets of the high-strength steel with the flame, the proven expertise of the master aligner at Jebens was needed.



Picture 11-14: © Jebens GmbH

We would be pleased to send you these or other images in printable resolution via e-mail.

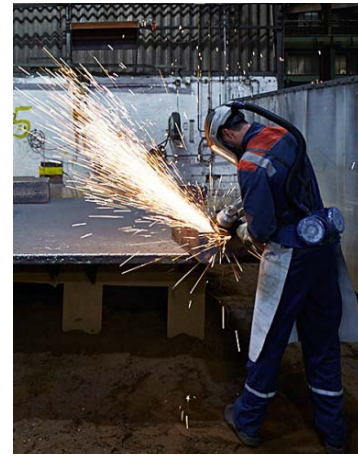
Such image material may be used solely for the JEBENS subject stated here. Any and all other uses, and use for non-JEBENS corporate purposes in particular, is hereby expressly prohibited.



impetus.PR
Agentur für Corporate Communications GmbH

Ursula Herrling-Tusch
Charlottenburger Allee 27-29
D-52068 Aachen
Tel: +49 [0] 241 / 1 89 25 - 10
Fax: +49 [0] 241 / 1 89 25 - 29
E-Mail: herrling-tusch@impetus-pr.de

Precision steelwork for roll frame presses: Fine-grained steel perfected



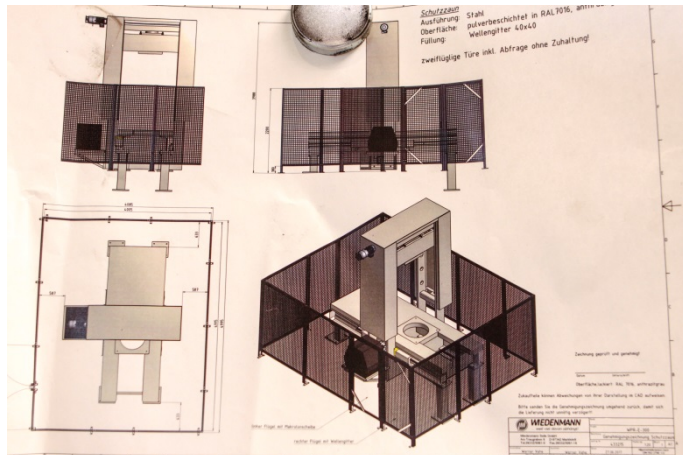
Picture 15-17: The many years of experience of the flame cutting specialists in the challenging precision steel work spoke in favour of Jebens.

Picture 15-17: © Jebens GmbH

Picture 18-19: © Wiedenmann-Seile GmbH

We would be pleased to send you these or other images in printable resolution via e-mail.

Such image material may be used solely for the JEBENS subject stated here. Any and all other uses, and use for non-JEBENS corporate purposes in particular, is hereby expressly prohibited.



Picture 18: Wiedenmann only needed six weeks from the first contact to the presentation of the baseline design, including the detailed description.



Picture 19: Volker Kohlhepp, head of sales at the steel manufacturing company and a member of the board of directors.



impetus.PR
Agentur für Corporate Communications GmbH

Ursula Herrling-Tusch
Charlottenburger Allee 27-29
D-52068 Aachen
Tel: +49 [0] 241 / 1 89 25 - 10
Fax: +49 [0] 241 / 1 89 25 - 29
E-Mail: herrling-tusch@impetus-pr.de